



24 SILVERTON WAY
WOLVERHAMPTON, WV11 3LH

OFFERS IN THE REGION OF £169,950
FREEHOLD

Two bedroom semi-detached home in a highly sought after location, available with NO ONWARD CHAIN. Requiring general updating, the property comprises entrance hall, living room, dining kitchen, two bedrooms and shower room and has a driveway and garage providing off road parking.



24 SILVERTON WAY

- NO CHAIN • REQUIRES UPDATING • SOUGHT AFTER LOCATION • TWO BEDROOMS • DINING KITCHEN • GARAGE • DRIVEWAY • REAR GARDEN



APPROACH

The property is approached via a driveway providing off road parking and access to the garage.

ENTRANCE HALL

Radiator, staircase to the first floor landing.

LIVING ROOM

14'1" x 11'2"

Double-glazed windows to the front and side and a radiator.

DINING KITCHEN

14'4"ax x 8'11"ax, 5'10"in

Double-glazed windows to the side and rear, wall and base cupboards and a doorway to the rear garden.

FIRST FLOOR LANDING

Doors to:

BEDROOM ONE

Double-glazed window to the front and radiator.

BEDROOM TWO

9'3" x 8'2"

Double-glazed window to the rear and radiator.

SHOWER ROOM

Double-glazed obscure window to the rear, radiator, close-coupled w.c, pedestal wash hand basin and shower enclosure.

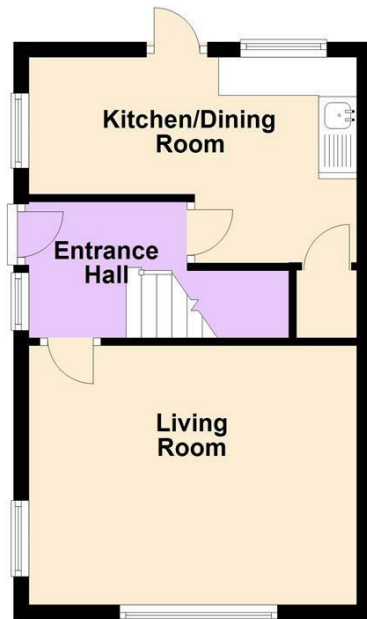
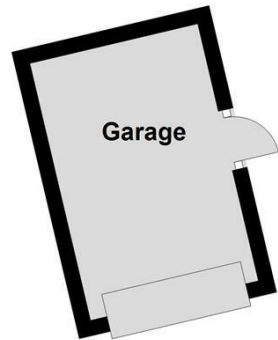
REAR GARDEN

To the rear of the property is an enclosed garden with a gate to the front driveway.

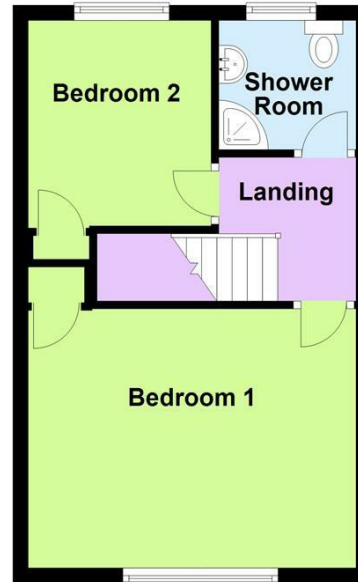
24 SILVERTON WAY



Ground Floor



First Floor



Energy Efficiency Rating		
	Current	Potential
Very energy efficient - lower running costs		
(92 plus) A		
(81-91) B		85
(69-80) C		
(55-68) D	52	
(39-54) E		
(21-38) F		
(1-20) G		
Not energy efficient - higher running costs		
England & Wales	EU Directive 2002/91/EC	



Sanders, Wright & Freeman - Sales
13 Waterloo Road
Wolverhampton
West Midlands
WV1 4DJ

01902 575555
enquiries@swfestateagents.co.uk
www.swfestateagents.co.uk

Agents Note: Whilst every care has been taken to prepare these particulars, they are for guidance purposes only. All measurements are approximate and are for general guidance purposes only and whilst every care has been taken to ensure their accuracy, they should not be relied upon and potential buyers/tenants are advised to recheck the measurements